



ARCHITECTURE AND
STRUCTURAL
ENGINEERING



PORT
FOLIO



From Drafting To Crafting...

NIDHI VENTURES

TABLE OF CONTENTS

- INTRODUCTION
- SERVICES OFFERED
- SAMPLE WORK
- WORKFLOW
- SUSTAINABILITY AND INNOVATION
- CONTACT

From Drafting To Creating..



INTRODUCTION

We are a distinguished architectural and structural engineering firm committed to crafting innovative, sustainable, and durable built environments. Our team is fervently dedicated to integrating state-of-the-art technology with enduring design principles and vastu considerations resulting in spaces that not only fulfill our clients' requirements but also inspire and enhance their daily lives.

Embracing a culture of excellence and a collaborative ethos, we specialize in providing comprehensive design and engineering solutions for a diverse array of projects, spanning residential and commercial developments to large-scale infrastructure ventures. At Nidhi Ventures, we are driven by a philosophy that combines pushing the boundaries of creativity with ensuring each project is firmly rooted in pragmatism, effectiveness, and environmental stewardship.

Whether you aspire to bring a visionary concept to fruition or require expert engineering guidance for your upcoming construction project, Nidhi Ventures stands ready to support you at every stage of the process. Let us join forces to construct a future that is not only superior but also more luminous.

SERVICES OFFERED

- **Conceptual Design :**

The initial stage of design where we develop the basic idea and layout for the project, including the building's shape, size, and overall appearance using Architectural Softwares and Manual Drawings.

- **Schematic Design :**

In this phase, we create detail drawings that outline the general design, including floor plans, elevations, and site plans using various architectural softwares.

- **Design Developments:**

The design is further refined with more detailed plans, including structural elements, materials, and systems (like HVAC and plumbing) to ensure the project is feasible and meets the client's needs.

- **Interior Design :**

We design the interior spaces, selecting materials, colors, furniture, and finishes to create a cohesive and functional environment.

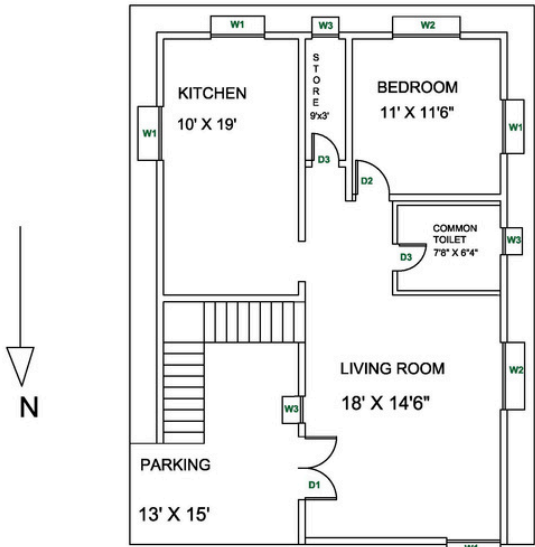
- **Structural Analysis and Design**

Assessing and designing the building's framework to ensure it can support the intended loads (e.g., weight of the building, occupants, and environmental forces like wind or earthquakes).

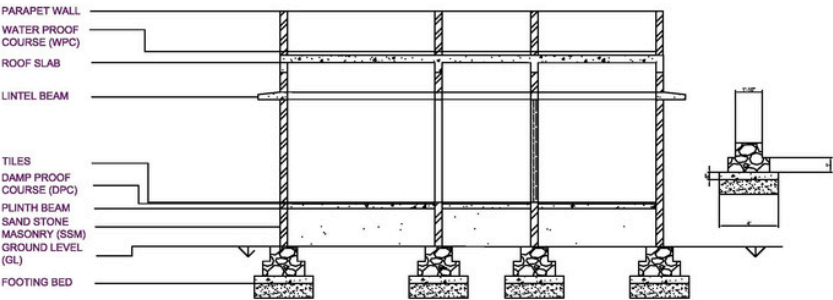
- **Building Information Modeling (BIM)**

Using advanced software to create 3D models of the building, which include detailed information about the structure, materials, and systems, aiding in both design and construction.

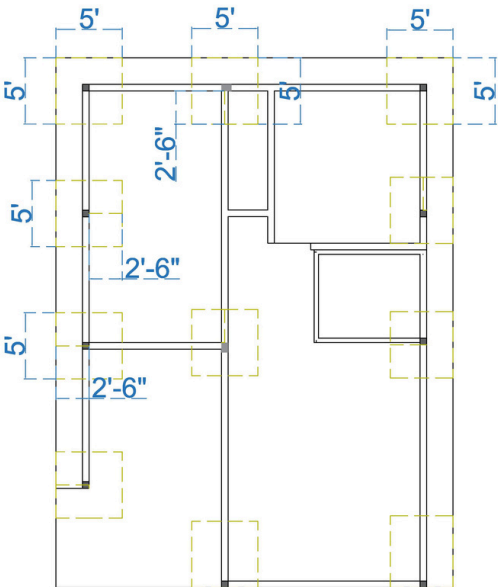
SAMPLE WORK



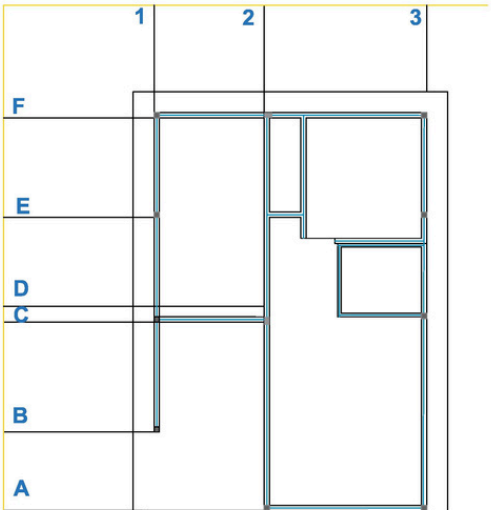
PLAN
30 x 40
1 BHK RESIDENTIAL BUILDING



CROSS SECTION ELEVATION



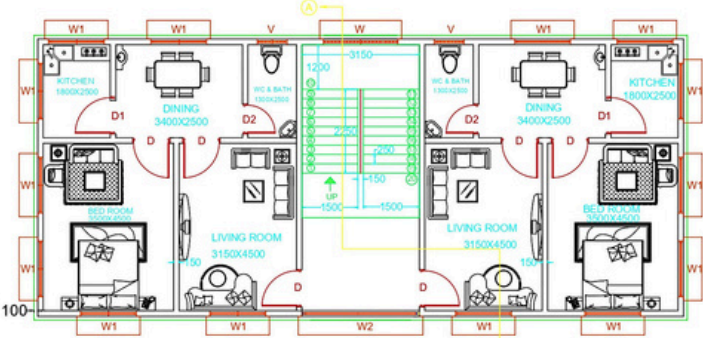
EXCAVATION PLAN



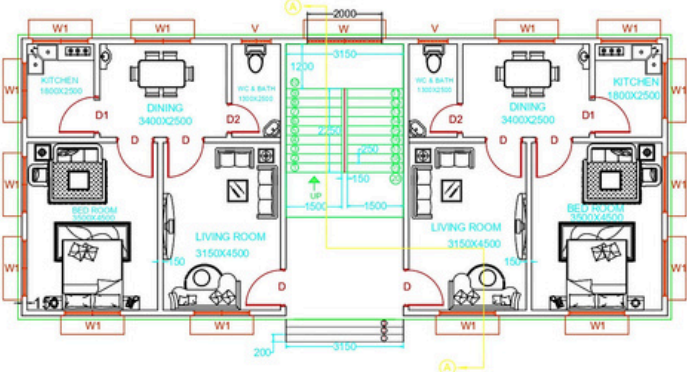
COLUMN BEAM PLAN

Plan of a 1 BHK Residential Building

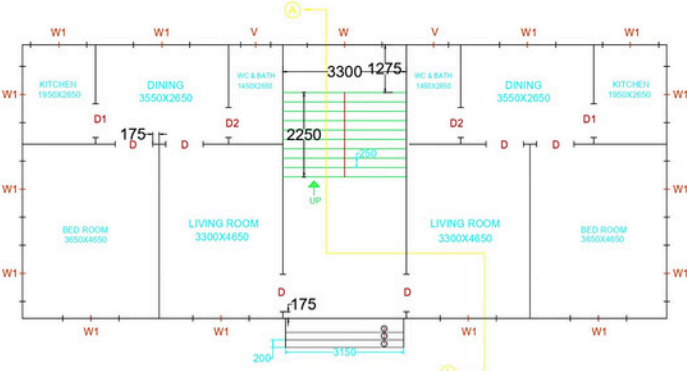
SAMPLE WORK



1st to 5th floor plan



Ground floor plan

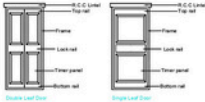


Center Line Plan

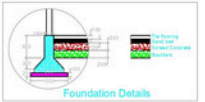


Elevation

Door Sizes	
D	1000x2200
D1	900x1800
D2	800x1800

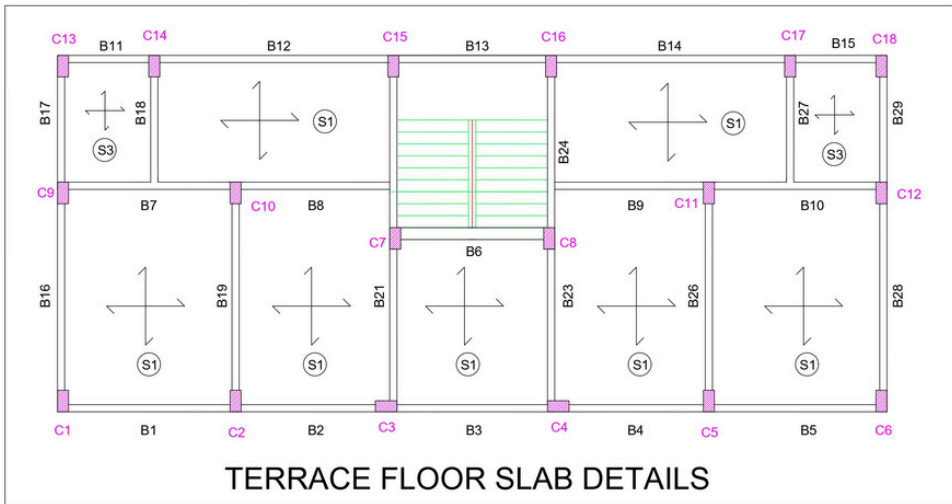
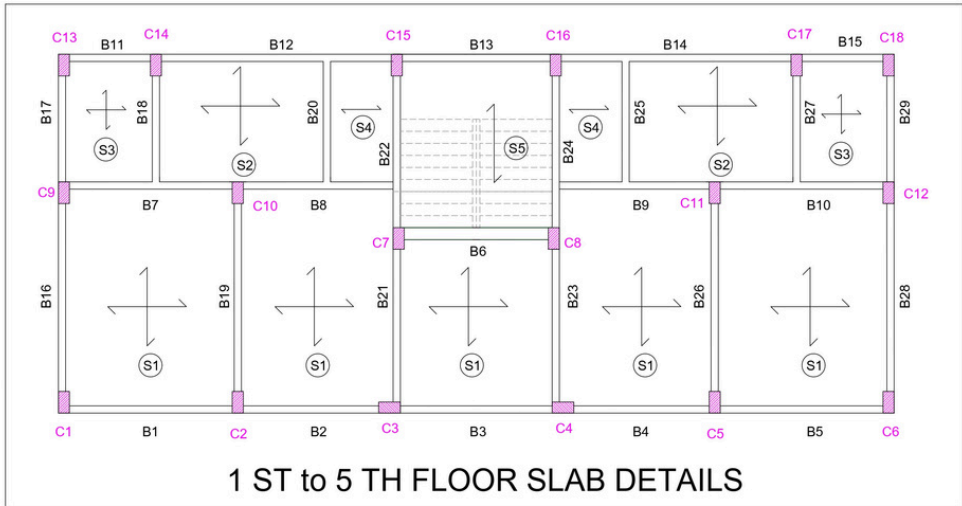
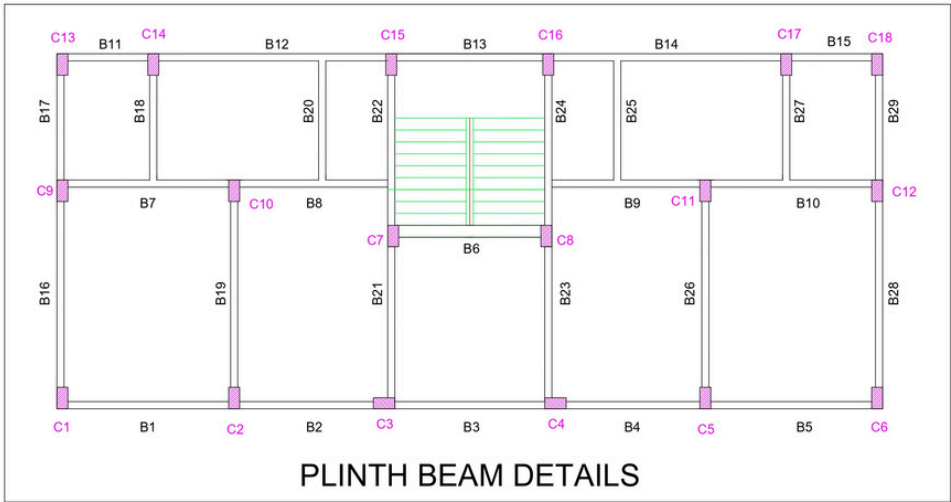


Window Sizes	
W	2000 x 1500
W1	1500 x 1200
W2	3150 x 1800
V	600 x 600



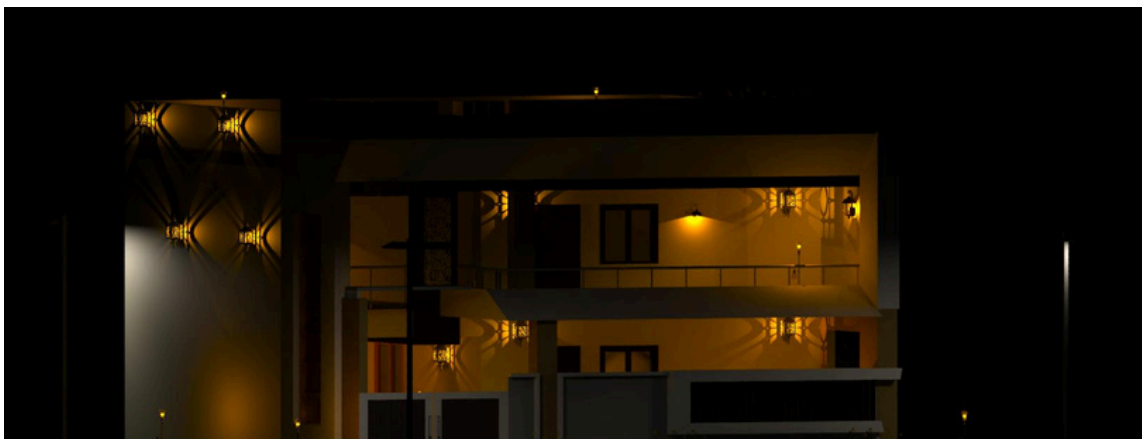
Plan of a 5 Storey Residential Building

SAMPLE WORK



Structural Details of 5 Storey Building

SAMPLE WORK



Elevations

SAMPLE WORK



Elevations

SAMPLE WORK



Elevations

SAMPLE WORK



Elevations

SAMPLE WORK



Interiors

SAMPLE WORK



Interiors

WORK FLOW

1



Meet Us

We can meet over a cup of coffee or online and would wish to know what the client is looking for.

3



Prepare A Sample

Before finalising your dream structure, we prepare a prototype that would help you visualise your building and then discuss future enhancements.

5



Seal the Deal

You can therefore seal the deal by paying a signing amount of 10% .pay 50% of the order value to Kickstart the process and the balance at the time of handover.

7



Move In

Congratulations! We are done. You can now move into your dream home. Thus, we bring your dream into reality.

2



Share your dreams

We ensure to follow your preferences and there by, create and organise the way you want.

4



Scope of Work

It is the time to finalize the scope of work and discuss about the requirements - Materials and more

6



Execution

While we immediately begin work on your different requirements, our quality control team keeps a strict check. We also keep you posted about the process.

SUSTAINABILITY & INNOVATION

Sustainability Services

- **Green Building Design :**

Designing buildings that minimize environmental impact by using energy-efficient systems, sustainable materials, and reducing waste during construction and operation.

- **Energy Efficiency Consulting**

Assessing and optimizing a building's energy use to lower consumption, reduce costs, and improve environmental performance through techniques like better insulation, efficient lighting, and renewable energy sources.

- **Water Management Solutions**

Designing systems that efficiently manage water use, including rainwater harvesting, greywater recycling, and low-flow fixtures, to reduce water consumption and wastage.

- **Modular & Prefabricated Construction**

Using modular or prefabricated components that are built off-site and then assembled on-site, reducing construction time, waste, and costs, while maintaining high quality.

- **VR Enhanced Visualisation**

It allows our clients to experience a 3D, immersive view of a building before it's constructed. This makes it easier to visualize the design, understand the space, and make informed decisions early in the project.



CONTACT US



nidhiventures24@gmail.com



DISHA H N +91 94485 55976
NIHARIKA S +91 99004 88885